

LAND CERTIFICATE NO. 46185 COPY

Land Certificate No. 46185 Tulcea

A. Part I. Property description LAND

within the built-up area

Address: Loc. Tulcea, Str. 7 NOIEMBRIE, Jud. Tulcea

Item no.	Cadastral number Topographic number	Surface* (sqm)	Observations / References
A1	46185	392	Unfenced land; Land delimited by a concrete and metal fence, shield and conventional boundary.

B. Part II. Owners and documents

Entries regarding property rights and other real rights		References
85991 / 28/08/2020		
Administrative Act no. 143, dated 30/07/2020 issued by the Tulcea Local Council; Normative Act no. 1360, from 27/12/2001 issued by the GOVERNMENT OF ROMANIA; Administrative Act no. 133, dated 30/10/2008 issued by the TULCEA LOCAL COUNCIL; Administrative Act no. 11262, dated 20/08/2020 issued by the TULCEA LOCAL COUNCIL;		
B1	Tabulation, PROPERTY right, acquired by law, current share 1/1, initial share 1/1	A1
	1) TULCEA MUNICIPALITY, CIF (Fiscal Identification Code): 4321429, public domain	

C. Part III. ENCUMBRANCES.

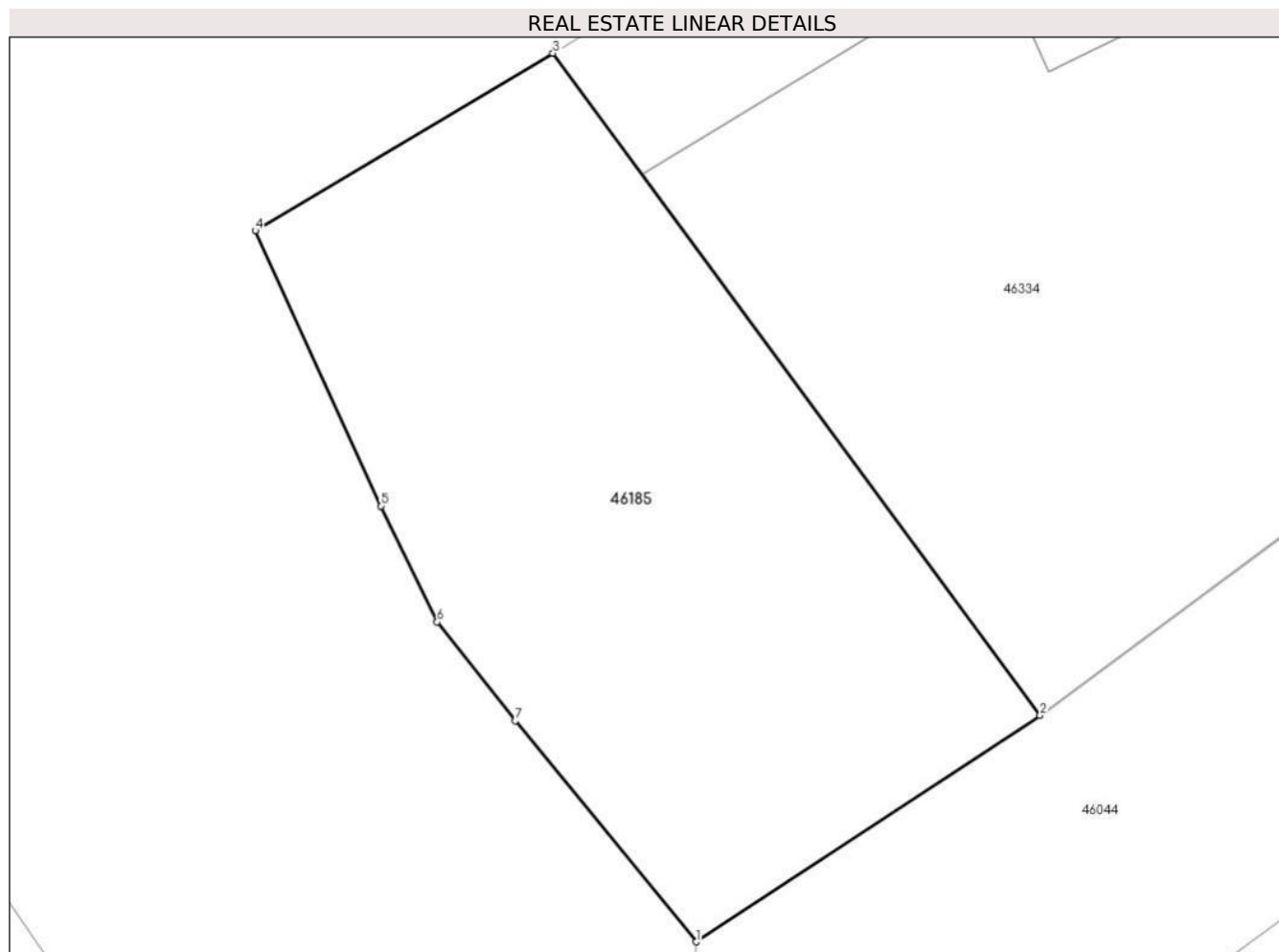
Entries regarding dismemberment of property rights, real rights of guarantee and encumbrances	References
NOT EXISTING	

Annex No. 1 To Part I

Land

Cadastral no.	Surface (sqm)*	Observations / References
46185	392	Land delimited by a concrete and metal fence, shield and conventional boundary.

* The surface is determined in the Stereo 70 projection plane.



Land related data

Item no.	Usage category	Land within the built-up area	Surface (sqm)	Strip land	Lot	Topographical no.	Observations / References
1	road	YES	392	-	-	-	

Segments length

1) The segment length values are obtained from the plan projection.

Start point	End point	Segment length (** (m))
1	2	14,067
2	3	28,086
3	4	11,835
4	5	10,338
5	6	4,405
6	7	4,302

Start point	End point	Segment length (** (m)
7	1	9,752

** Segment lengths are determined in the Stereo 70 projection plane and are rounded to 1 millimeter.

*** The distance between the points is made up of cumulative segments that are smaller than the value of 1 millimeter.